



Mantis

Silt Fence

- ✓ Durable Protection
- ✓ Permeable fabric
- ✓ Flexibility
- ✓ Easy Application and Removal

Welcome to Mantis Materials, where innovation meets protection. Our Silt Fence plays an irreplaceable role in environmental protection and land development.

Key Features:

- Permeable fabric: The core of Silt Fence is usually made of permeable synthetic materials such as polypropylene. This material has tiny pores that can effectively block sediment while allowing water to flow through.
- Durability: Fabric materials are usually resistant to UV rays, corrosion and aging, and can be used in outdoor environments for a long time.
- Flexibility: The fabric has a certain degree of flexibility and can adapt to changes in terrain to ensure a close fit with the ground.



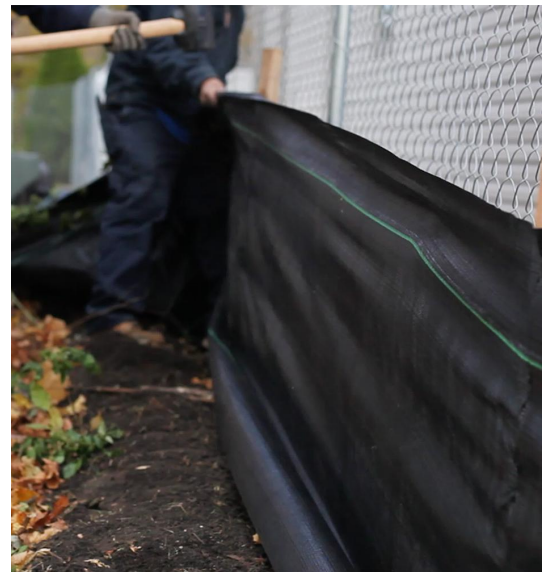
Mantis

Silt Fence

- ✓ Durable Protection
- ✓ Permeable fabric
- ✓ Flexibility
- ✓ Easy Application and Removal

Industry-Specific Applications:

- Construction Site:
 - Construction Sites: Silt Fence can prevent sediment loss, protect downstream water bodies, and the use of Silt Fence is in compliance with environmental regulations.
- Land development projects:
 - Land development projects: Silt Fence can be used to control surface runoff, prevent soil erosion, and provide temporary protection.
- Agricultural land:
 - Agricultural land: Install Silt Fence to protect farmland soil, reduce water pollution, and prevent gullies from forming.
- Road and infrastructure construction:
 - Road and infrastructure construction: Use Silt Fence for road construction protection, bridge and tunnel projects, temporary drainage systems.



Mantis

Silt Fence



- ✓ Durable Protection
- ✓ Permeable fabric
- ✓ Flexibility
- ✓ Easy Application and Removal

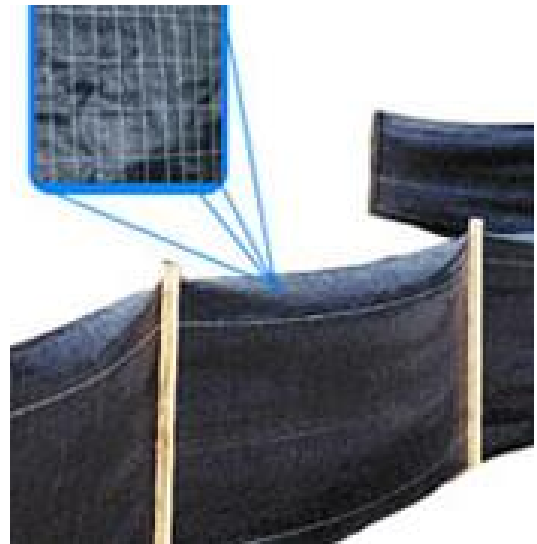
How Silt Fence works:

- Permeable fabric:
 - Permeable fabric: This is the core part of Silt Fence, usually made of polypropylene or other synthetic materials. This fabric has tiny pores that can effectively intercept silt while allowing water to flow through.
- Support piles:
 - Support piles: Support piles are usually made of wood or metal and are used to fix the permeable fabric to ensure that it can stand upright and withstand the impact of water flow.
- Buried part:
 - Buried part: The lower part of Silt Fence is usually buried to a certain depth underground to prevent water from bypassing the fence from the bottom.



The Importance of Silt Fence in Environmental Protection.

- Reduce sediment loss: Silt Fence can effectively intercept sediment in rainwater and prevent it from flowing into rivers, lakes and other water bodies, thereby reducing soil erosion.
- Protect water quality: Sediment is one of the main sources of water pollution, especially in construction sites and agricultural land. Silt Fence reduces suspended matter in water bodies and protects water quality by intercepting sediment.
- Prevent river siltation: The loss of silt not only pollutes the water body, but also may cause siltation in the river and affect the smooth flow of water. The use of Silt Fence can reduce the entry of silt into the river and reduce the risk of siltation.



At Mantis Materials, we recognize the diverse needs of each industry. Our Silt Fence ensures tailored protection for surfaces, promoting the longevity and quality of your products in every application.

Mantis

Silt Fence

- ✓ Durable Protection
- ✓ Permeable fabric
- ✓ Flexibility
- ✓ Easy Application and Removal

Specifications:

Item Name	Silt Fence
Color	Green, Black, Dark green or ad your required
Thickness	0.25-0.4mm
Specification	Roll Size: 2m wide * 100m long (length can be customized) Finished size: 2x2m, 3x3m, 3x5m, 4x4m (6x6ft, 10x10ft, 10x16ft, 13x13ft) 4x5m, 4x6m, 4x8m, 4x10m (12x16ft, 12x20ft, 12x26ft, 12x32ft) Customized

We offer a wide range of custom sizes and colors for your convenience.

Additionally, logo printing is available throughout the entire roll.

Fire retardance in the material is optional.

